

DTS – Accessories for Elevated Lights

Baseplate

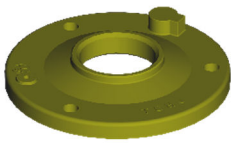
Compliance with standards

- CAAC: AC-137-CA-2015-03-R1
- FAA: AC 150/5345-46

Features

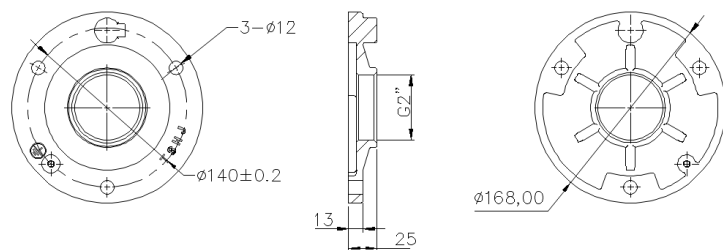
- UV resistant coating
- 2 inches female thread

■ Type BP 168

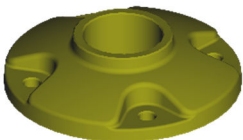


Casting Method: High pressure casting
Material: Cast aluminum alloy
Net Weight: 0.46 kg
Application: Mounted on the pavement.
Mainly used for runway edge lights, taxiway edge lights, runway threshold lights, threshold wing bar lights, runway end lights and PAPI.

DIMENSIONS (mm):

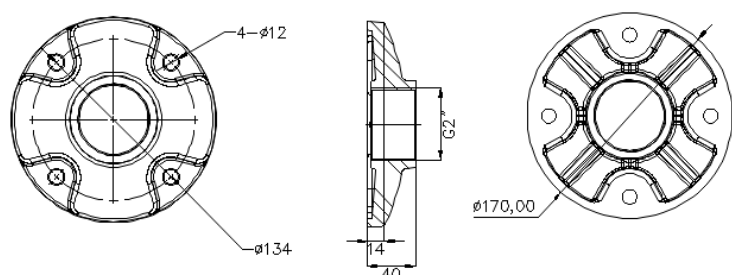


■ Type BP 170



Casting Method: Sand casting
Material: Cast aluminum alloy
Net Weight: 0.74 kg
Application: Mounted on the pavement.
Mainly used for signs and PAPI.

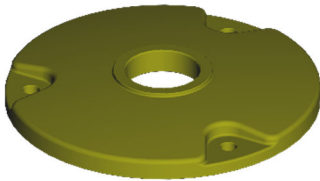
DIMENSIONS (mm):



DTS – Accessories for Elevated Lights

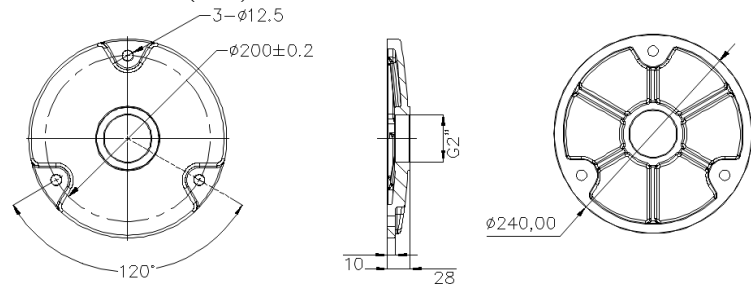
Baseplate

■ Type BP 240

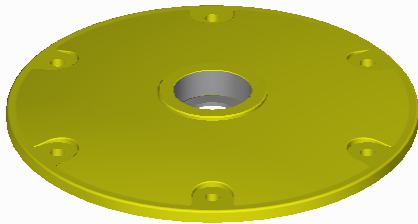


Casting Method: High pressure casting
 Material: Cast aluminum alloy
 Net Weight: 1.16 kg
 Application: Mounted on the pavement

DIMENSIONS (mm):

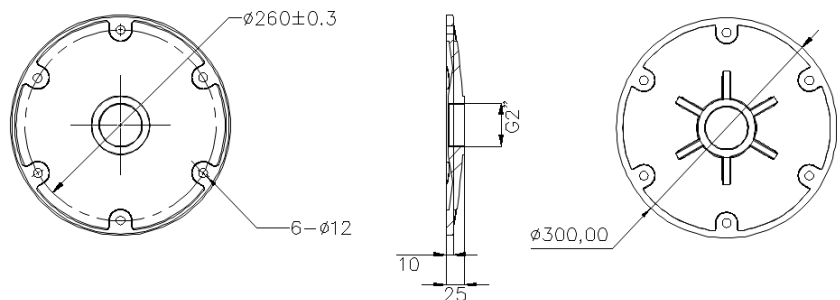


■ Type BP 300

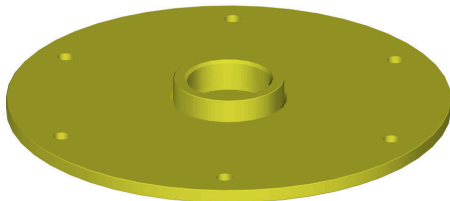


Casting Method: High pressure casting
 Material: Cast aluminum alloy
 Net Weight: 2.04 kg
 Application:
 Mounted on the pavement or on a 12
 inch L-867 deep base.

DIMENSIONS (mm):

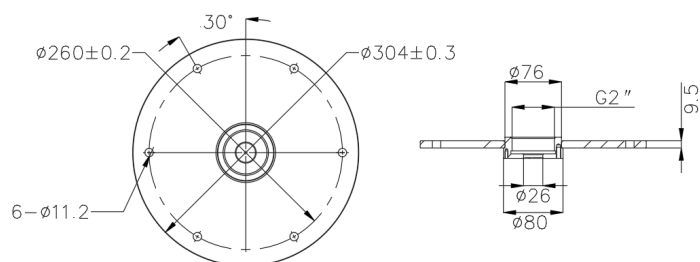


■ Type BP 304



Manufacturing Method: Machine made
 Material: Stainless steel
 Finish: Aviation yellow powder coat
 Application: Mounted on a 12 inch L-867
 deep base or on the pavement. Mainly used
 for FAA type runway guard lights and run-
 way end indicator lights.

DIMENSIONS (mm):



DTS – Accessories for Elevated Lights

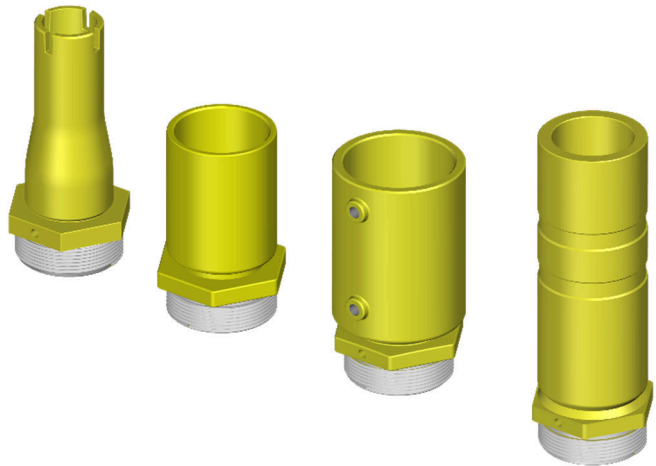
Frangible Coupling

Compliance with standards

- ICAO DOC 9157, Part 6
- CAAC: AC-137-CA-2015-03-R1
- FAA: AC 150/5345-46

Features

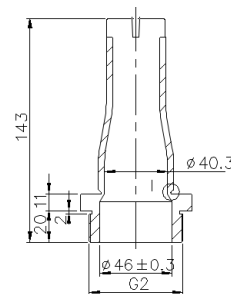
- UV resistant coating
- 2 inches male thread



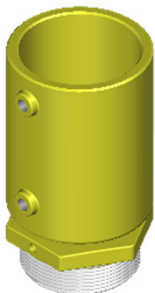
Type FC-21



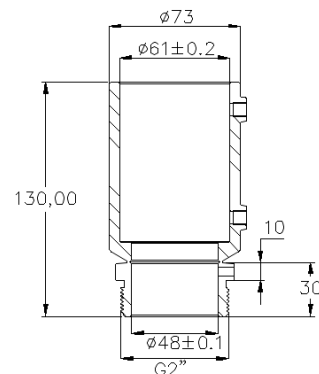
Casting Method: High pressure casting
Material: Cast aluminum alloy
Net Weight: 0.22 kg
Application: Taxiway edge lights and runway edge lights



Type FC-A



Casting Method: High pressure casting
Net Weight: 0.28 kg
Material: Cast aluminum alloy
Application: Approach lights, threshold lights, PAPI and sequence flashing lights, IEC type runway guard lights and runway threshold indicator lights



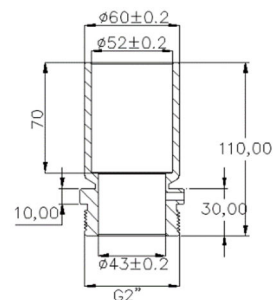
DTS – Accessories for Elevated Lights

Frangible Coupling

Type FC-B



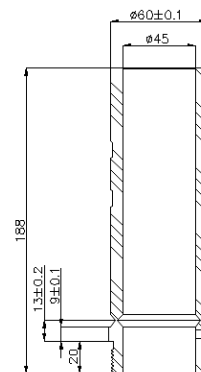
Casting Method: High pressure casting
Net Weight: 0.42 kg
Material: Cast aluminum alloy
Application: Runway end lights, Stop bar lights, PAPI and Sequence flashing lights



Type FC-C



Manufacturing Method: Machine made
Net Weight: 0.62 kg
Material: Aluminum alloy
Application: FAA type Runway guard lights and Runway end indicator lights



DTS – Accessories for Elevated Lights

Base Assembly for RGL and RTIL (REIL)

Compliance with standards

- ICAO DOC 9157, Part 6
- IEC TS 61827
- CAAC: AC-137-CA-2015-03-R1
- FAA: AC 150/5345-46

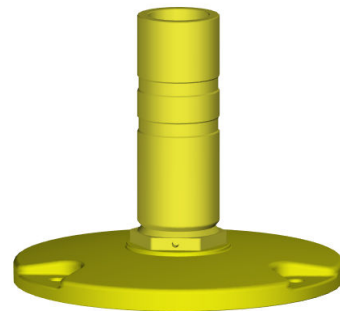
Standard Base Assembly

Application:

Mounted directly on the pavement

Components:

- Frangible Coupling type FC-C
- Baseplate type BP 240



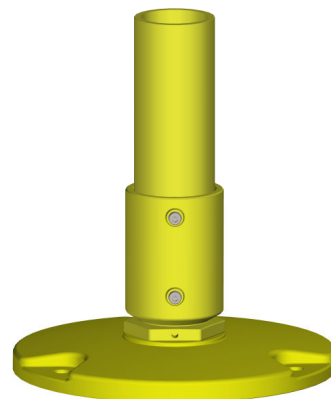
IEC Type Base Assembly

Application:

Mounted directly on the pavement

Components:

- Supporting Pole
- Frangible Coupling type FC-A
- Baseplate type BP 240



DTS – Accessories for Elevated Lights

Base Assembly for RGL and RTIL (REIL)

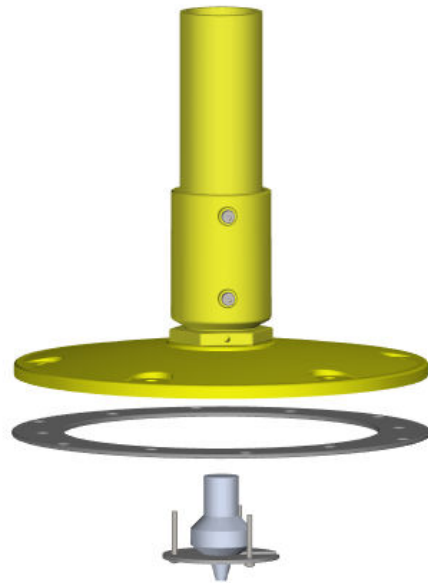
IEC Type Base Assembly

Application:

Mounted directly on the pavement or
on L-867 12 inches deep base

Components:

- Supporting Pole
- Frangible Coupling type FC-A
- Baseplate type BP 300
- Baseplate gasket (for L-867 base)
- Fixing assembly for L-823 receptacle style (for L-867 base)



FAA Type Base Assembly

Application:

Mounted directly on the pavement or
on L-867 12 inches deep base

Components:

- Frangible Coupling type FC-C
- Baseplate type BP 304
- Baseplate gasket (for L-867 base)
- Fixing assembly for L-823 receptacle style (for L-867 base)

